



**MASKWA**  
Medical Center



**ANNUAL REPORT**

# TABLE OF CONTENTS

Message From The Board Chair	1
What is Maskwa Medical Center?	2
Improving the Healthcare Process	3
Demonstrating the Need	4
2024/2025 Year In Review	5
Financial Summary	6
Funding & Community Partners	7
Employee Wellness Sponsors	8
Future Plans & Strategic Priorities	9

# MESSAGE FROM THE BOARD CHAIR

## Dear Friends and Supporters,

It is with great pride and appreciation that I share this year's reflections on behalf of the Board of Directors. Guided by a shared commitment to improving healthcare access in rural Alberta, Maskwa Medical Center has worked closely with municipal stakeholders, corporate donors, and individual supporters to advance the Premier's vision of a stronger, more equitable healthcare system for all. We are deeply grateful for their unwavering support, which continues to drive our progress forward toward a future where every Albertan, no matter their location has timely and reliable access to medical care.

Over the past twelve months, we reached a significant milestone with the completion of the design and engineering for the 105,000-square-foot Maskwa Medical Center, being constructed in front of the new Regional Hospital in Grande Prairie. After a two-month process of interviews and due diligence with three qualified builders, we selected Clark Builders of Edmonton to lead the project. Construction officially began in June 2025, marking the beginning of an exciting new chapter for healthcare in our region.

This year also saw major achievements beyond construction. We deepened our relationships with municipal stakeholders across the region and secured important funding commitments from both public and private sources, laying a strong foundation for the Maskwa Medical Center. We have already secured, or will soon receive, \$14 million in contributions from four major municipal governments, along with several hundred thousand dollars in additional commitments from regional communities and private and corporate donors. Our capital campaign remains active as we continue to raise the necessary funds to complete construction. Thanks to sound fiscal management, the organization remains in a healthy financial position, providing us with the stability and confidence to move forward with purpose.

The vision for this facility is bold and we understand that lasting change will take time. With construction now underway, we are on track for the facility to become operational in 2027. Once open, Maskwa will play a pivotal role in training and deploying family physicians and specialists to under served communities across northwest Alberta. While the transformation will not happen overnight, we are steadfast in our long-term goal and by 2035, no resident in our region should face long wait times or travel long distances to access timely, high-quality medical care.

As a Board, we are inspired by what lies ahead. The work is far from over, but our commitment is unwavering. Together, with your continued support we are building more than just a facility. We are building a legacy of health, access, and opportunity for generations to come.

Yours truly,



*Ken Drysdale, the Board Chair*



Maskwa is an innovative, Alberta based, not-for-profit registered charity committed to accelerating the process and improving access to medical specialists and services for the people of the Peace Region.

## HISTORY

In 2018, Maskwa Medical Center was officially launched, yet its roots can be traced back to a pivotal moment in 2008. It was then that Ken Drysdale and his wife faced a harrowing prognosis: she was given four to six months to live. Drysdale reached out to the Mayo Clinic in Scottsdale, Arizona, which quickly redirected them to their Rochester, Minnesota facility.

Upon their arrival at the Mayo Clinic, the Drysdales were immediately struck by the stark differences in healthcare delivery. The corrected prognosis they received there, which contradicted the initial dire outlook, brought immense relief but also sparked a critical realization in Drysdale: the power of a collaborative, team-based approach to healthcare which led to the formation of the Maskwa Medical Center.

Choosing the name "Maskwa," which reflects a deep respect for the diverse Indigenous communities and Treaty 8 territories of NW Alberta, the center embodies a commitment to healing, shared knowledge, and a collaborative spirit in healthcare.

## WITHIN THE CENTER

Maskwa Medical Center will be a state-of-the-art facility that will house the University of Alberta Training Clinic and the Maskwa Medical Specialist Clinic. The U of A residency program will graduate ten doctors per year, with many expected to stay in the region. The Maskwa Medical Specialist Clinic will provide expert team based diagnosis and treatment plans for complex and chronic conditions through consultations with specialists from across Western Canada.

## EXPECTED IMPACT & OUTCOMES

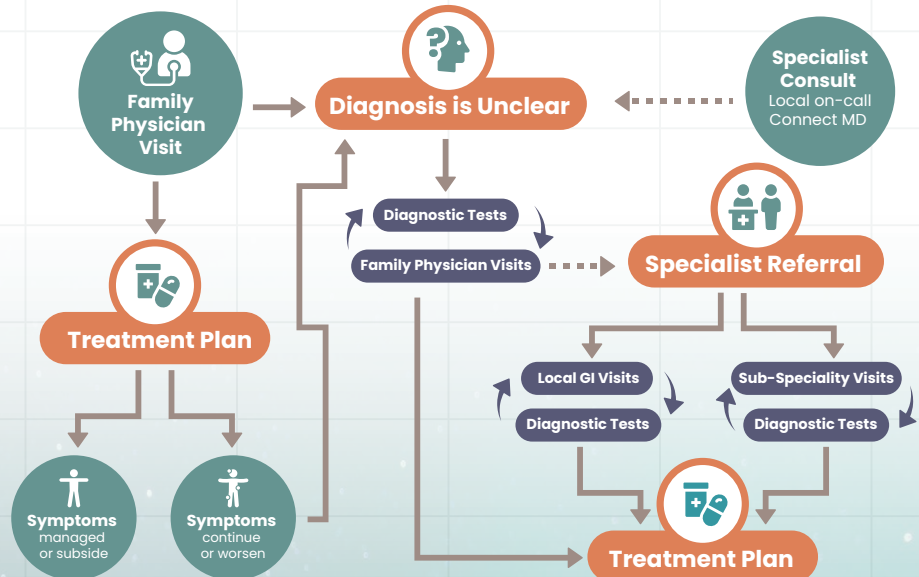
- Better access to family physicians for rural communities
- Reduced wait times to see a specialist
- Reduced hospital and ER visits
- Better health outcomes for patients
- Lower patient travel costs
- Over time it will reduce long term healthcare costs for the healthcare system



# MASKWA: IMPROVING THE HEALTHCARE PROCESS

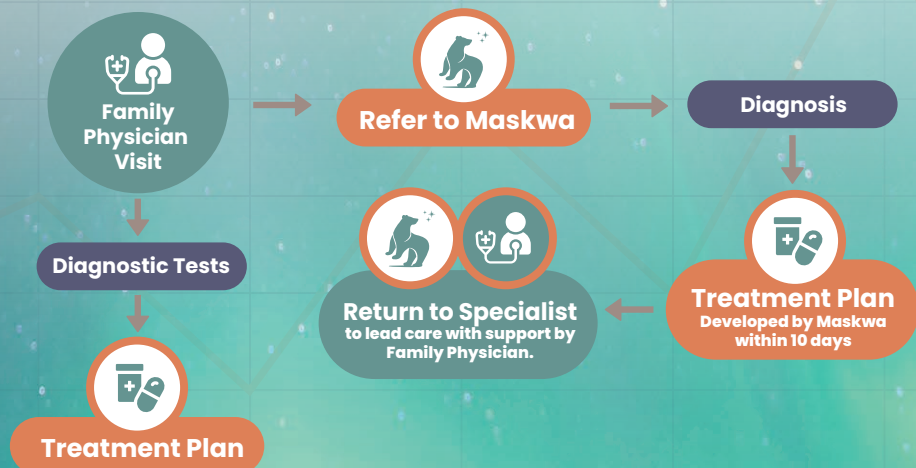
## ALBERTA'S CURRENT HEALTHCARE PROCESS

The current process has proven to be both tedious and inefficient for residents of NW Alberta. Uncertain diagnosis and time-consuming trips to larger urban centers has created an unneeded burden on families. The health care system is overloaded causing many cases to get overlooked or not getting the follow-up patients need to recover.



## MASKWA'S IMPROVED HEALTHCARE PROCESS

Through the connections physicians will have through the Maskwa Medical Specialist Clinic, patients will receive the appropriate diagnostic and lab testing locally, or outside the region if necessary. The Clinic will continue to communicate with the patient to ensure the treatment plan is progressing.



# DEMONSTRATING THE NEED

Residents of northwestern Alberta often travel long distances to major urban centres like Edmonton or Calgary for medical tests and specialist care—costing them both time and money. The Maskwa Medical Specialist Clinic aims to reduce this burden by leveraging virtual technology to connect patients with specialists across Western Canada. This approach will enable faster, more accurate diagnoses and treatment plans, ultimately improving health outcomes in the region.



**80%**

less internal medicine specialists in NW Alberta when compared to the rest of Alberta

NW Alberta



**= 1.06**

1,000 people

Internal Medical Specialist

Central Alberta

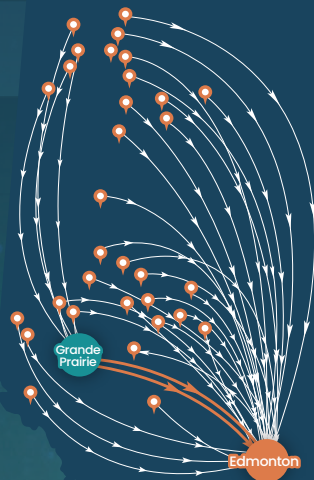


**= 1.29**

1,000 people

Internal Medical Specialist

## Current Process



## Maskwa Service Process



# 2024/2025 YEAR IN REVIEW

## KEY ACCOMPLISHMENTS & MILESTONES



“We recognize the importance of fostering partnerships that aim to enhance healthcare accessibility and quality, and we are eager to collaborate with organizations like yours that share our vision of making a positive impact in society.

**Dr. Vanessa Sheane**  
President & CEO,  
Northwestern Polytechnic

“On behalf of the Faculty of Medicine & Dentistry, I extend my warmest congratulations to the Maskwa Medical Center on its steadfast progress over the past year. This dedication to providing increased access to quality care will make a meaningful difference in the region.

We are honoured to collaborate with Maskwa in this innovative facility, training health-care professionals who will serve the families of northern Alberta. Partnerships like ours are essential to strengthen our health system, and it is a privilege to work together on this important initiative.

I look forward to continuing our collaboration as we move toward your opening next year.

**Dr. Brenda Hemmelgarn**  
Dean & Vice-Provost, College of Health Sciences  
Dean, Faculty of Medicine & Dentistry  
University of Alberta

**PARTNERSHIPS AND  
COLLABORATIONS**



**University  
of Alberta**

**NAF**  
Northwestern Alberta  
Foundation

# FINANCIAL SUMMARY\*

	2025	2024
<b>FINANCIAL POSITION AT MARCH 31ST</b>		
Current Assets	\$339,125	\$1,014,729
Tangible Capital Assets	+ \$1,438,830	+ \$320,186
<b>Total Assets</b>	<b>\$1,777,955</b>	<b>\$1,334,915</b>
Less Current Liabilities	- \$168,913	- \$339,800
<b>NET ASSETS</b>	<b>\$1,609,042</b>	<b>\$995,115</b>
<b>CONSOLIDATED OPERATIONS</b>		
Government Grants	\$500,000	\$1,000,000
Donations	\$296,071	\$79,350
Total Revenues	\$796,071	\$1,079,350
Expenditures	\$182,144	\$74,903
Excess of Revenues over Expenditures	\$613,927	\$1,004,447
Investment in Tangible Capital Assets	\$1,118,644	\$320,186
IMPACT ON CASH	\$(504,717)	\$684,261

\* Please refer to audited financial statements available at [www.maskwamedical.ca](http://www.maskwamedical.ca) for details



# FUNDING & COMMUNITY PARTNERS

## COMMITMENTS PRIOR TO MARCH 31, 2025



## COMMITMENTS AFTER MARCH 31, 2025



## SPONSORS PRIOR TO MARCH 31, 2025

### MAJOR LEVEL SPONSORS

**BILL & KAREN  
MCCLELLAND FAMILY**

**KEN & SHERRY  
DRYSDALE**

### PARTNER LEVEL SPONSORS

Brent & Gwen Hoyseth Family  
Cenovus

Dan & Diane Steinke Family  
Derenisky Family

Mark & Stephanie Malekoff Family  
Victoria's Attic Support the Girls

Charles & Karen Longmate Family

### FRIEND LEVEL SPONSORS

Bridget & Norm Hennigar

Tab & Lori Pollock

### GIFT-IN-KIND

MNP LLP

Nine10

National Car Rental

Parsons Printing & Typography

Terrace Construction Development Inc.

UFA

Windsor Ford

# EMPLOYEE WELLNESS SPONSORS

At Maskwa Medical Center, we believe that healthy employees are the foundation of a successful and thriving workplace. As part of our commitment to improving community health and well-being, we are proud to introduce the Employee Wellness Champion Program – an opportunity for employers to invest in the health of their workforce and their families

## **AltaGas**

“

At AltaGas, we believe that our employees are at the heart of our company. Investing in their health and well-being is imperative. That's why we're proud to support the Maskwa Medical Center Employee Wellness pledge on behalf of over 175 employees and their families in the region. Together, we can build a stronger community by helping to alleviate the issue around timely access to healthcare.

## *Windsor Ford*

“

At Windsor Ford, we recognize that the health and well-being of our employees are fundamental to the success of our dealership. Supporting employee health is about fostering a community where our team members feel valued, supported, and empowered to bring their best selves to work. By investing in the Maskwa Medical Center, we are actively demonstrating our commitment to the long-term wellness of our employees, their families, and the community. We believe that when our employees are healthy, both physically and mentally, they are more engaged, innovative, and motivated to provide exceptional service to our customers. This investment reflects our core values of care, responsibility, and sustainability, as we work to build a healthier future for everyone connected to Windsor Ford.

*Organizations can participate by contributing \$170 per employee and their dependents. This initiative encourages wellness and acknowledges efforts to enhance employee health.*

# FUTURE PLANS AND STRATEGIC PRIORITIES

## GOALS FOR 2026



Fundraising  
towards  
the capital  
construction  
costs of the  
facility



Finalize  
University of  
Alberta lease



Select tenants  
for second floor  
spaces



Recruitment  
of Specialists  
for Maskwa  
Medical  
Specialist  
Clinic



Continue to  
work with  
Indigenous  
communities

## PLANS FOR PROGRAM EXPANSION, ADVOCACY, AND SUSTAINABILITY:



**ADVOCACY:**  
Better cross  
border access  
to health  
services for  
BC residents

## GET INVOLVED!



Donate to the  
capital campaign!

# CONTACT INFORMATION

## Location:

Adjacent to the Grande Prairie Regional Hospital

## Mailing Address:

722042B Range Road 63, Clairmont, AB, T8X 4L7

## Email:

[info@maskwamedical.ca](mailto:info@maskwamedical.ca)

## Phone:

780-831-0796



*Maskwa Medical Center is proud to operate on Treaty 8 Territory,  
traditional lands of First Nations and Metis people.*

MASKWAMEDICAL.CA